

Nordic Mittens - Designed by You!

Taught by Mrs. DillyDally (aka Terri Stavig)

tsdillydally81@gmail.com

Class Objectives

After completion of this class the knitter will have experienced the following freedoms:

- The ability to create custom-fit mittens for any size hand, using any size yarn, with any size needle!
- The bondage of "someone else's gauge" will be severed. Free at last!

Class Requirements

The knitter should come to this class with the following skills:

- Ability to knit and purl.
- Comfortable with circular knitting on double-pointed needles.
- Experience color strand knitting with two colors.

Class Recommendations

I suggest you knit mittens for yourself during this class. Remember ...these mittens are custom-fit...as a knitter, your own hands are immediately available for a "fitting when needed! ;-)

Class Materials

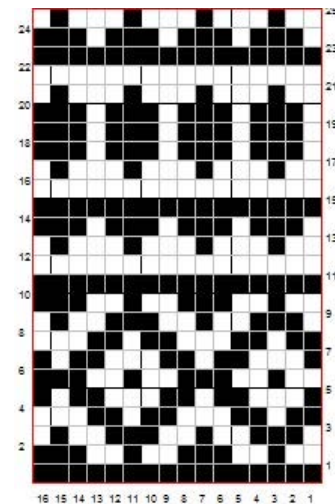
- Pencil with eraser.
- Small pocket calculator. I know, I know...but remember, knitting is math!
- Tape measure.
- A set of size 4 double pointed knitting needles.
- Worsted weight wool yarn in two contrasting colors. You'll need about 160 yards of the dominant color and about 80 yards in the contrasting color. Yardage is a bit of a guess as the amount you use is entirely dependent upon your own personal gauge. I highly recommend using Lamb's Pride for your first pair of mittens.
- Two knitting markers.
- Yarn or large tapestry needle.

Homework (This includes the gauge swatch that will set you free and the start of your mitten)

- With dominant color, cast on 40 stitches.
- Join ends and complete in circular fashion 5 rows of K2, P2 ribbing.
- Knit 2 rows.
- Begin and complete color pattern provided.
Continue to repeat the design all the way around.
- Knit 2 rows with dominant color.
- Complete 5 rows of K2, P2 ribbing.
- Bind off

Begin mitten

- With dominant color, cast on 40 stitches
- Join ends and in circular fashion complete 2.5 inches of K2, P2 ribbing.
- Leave on the needles and bring to class!



© 2014 Theresa Stavig. All rights reserved.