



WACHWA

Washington State Community
Health Workers Association



PRESENTERS

WACHWA Transitional Leadership Team

Lisa Gonzalez: Benton-Franklin

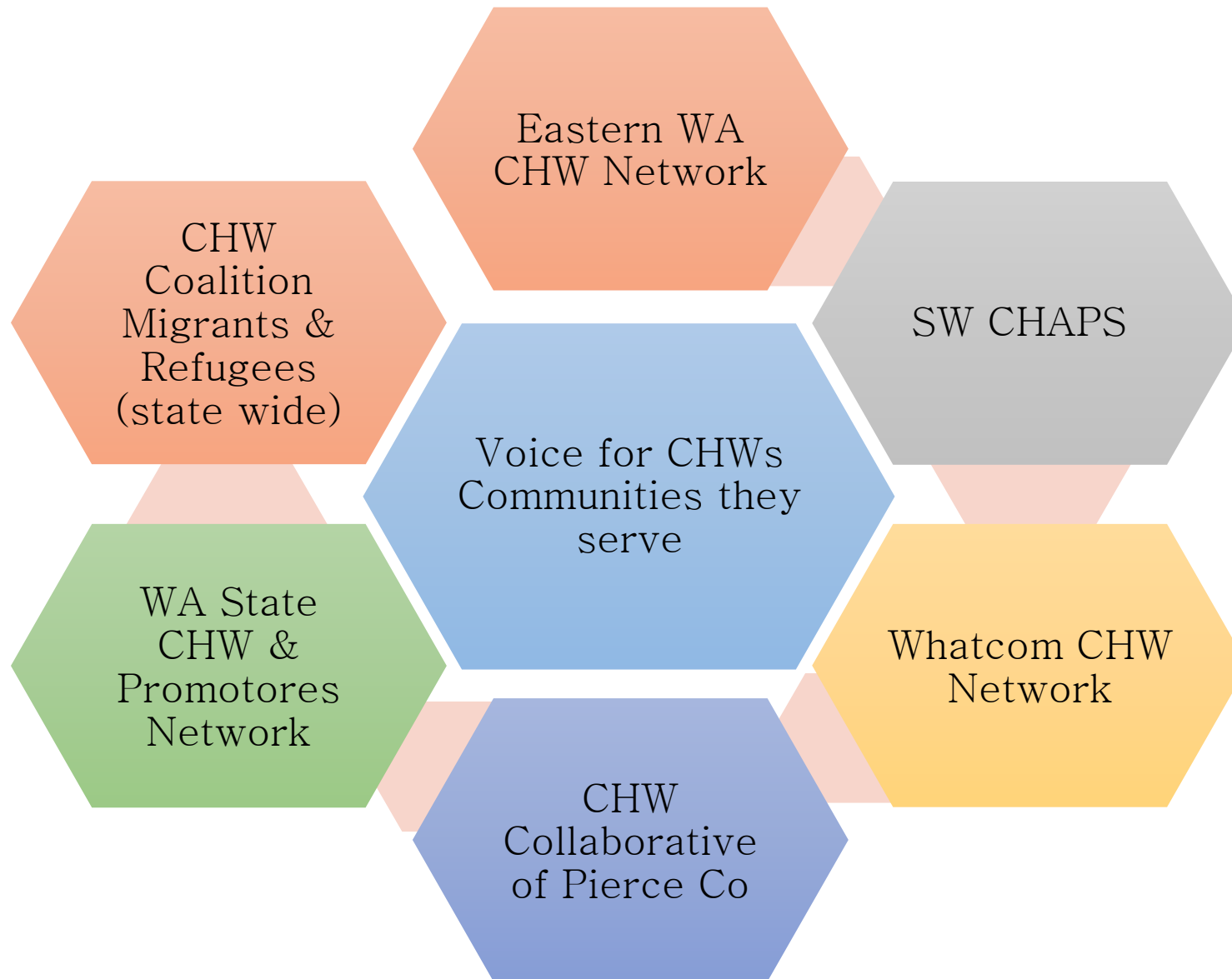
Rana Amini: ICHS/King County

CHW Members

Washington State CHW Association



WACHWA - Part of the Big Picture



Networks Provide

- Peer Support
- Professional Development
- Advocacy for CHWs
- Community Voice
- Local Systems Change
- State Systems Change



Peer Support

Strengthening Relationships of CHWs

- Learning from each other
- Providing support to each other
- Generating ideas and solutions



Professional Development

- What training or education they need
- How it should be delivered
- What challenges they face in the field



Advocacy for CHWs

CHWs voice their concerns and needs to policy makers:

- What tools or resources they need
- What is NOT helpful or what is a barrier
- What is equitable to their peers and to their community
- How to make changes for better health outcomes

Trusted Communicators

CHWs are uniquely positioned to:

- Provide information to community in a way they can use it
- Listen to community for vital feedback
- Build relationships between policy/systems and community members

Local Impacts

Eastern WA CHW Network

- Strategic Planning: June Conference, professional development, community engagement and advocacy.
- This network is the go to! They come to us as a trusted resource.

SW CHAPS

- Advocated for a Vancouver city ordinances that prohibits landlords from discriminating against potential tenants with SSI/VA or Section 8.
- Gathered CHWs/Peers and advocates to participate in Homeless Advocacy Day in Olympia.

CHW Collaborative of Pierce Co

- Helped to defeat the “world’s largest” methanol plant from being built on Tacoma’s tide flats—it would have devastated Tacoma’s ecology.
- Also contracted with Pierce ACH to gather community feedback from areas that are often left out.

A scenic view of Wenatchee, WA, featuring a river in the foreground, a town with a 'PUBLIC MARKET' sign, and mountains in the background. The text is overlaid on the top half of the image.

Fall Forum 2018

September 25 & 26

Wenatchee, WA

Meeting Objectives

- Collectively define the goals of the WA State CHW Association
- Develop initial strategic plan and governance principles
- Outline how the work will get operationalized over the next year



Who Attended the Fall Forum

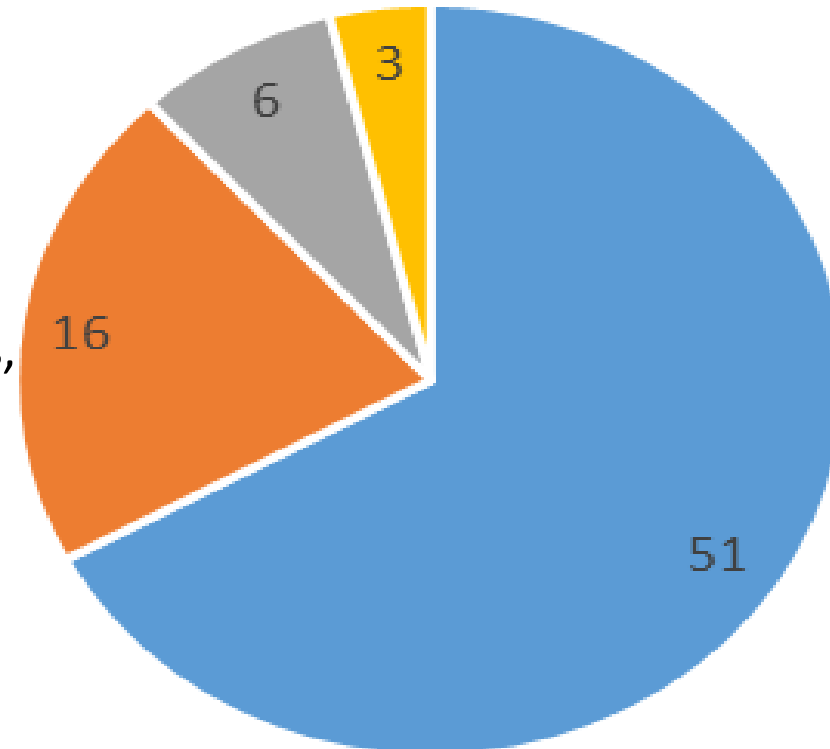
76 people registered for CHW Statewide Association Fall Forum

◆ 51 – CHWs, 67%

◆ 16 – other, 21%

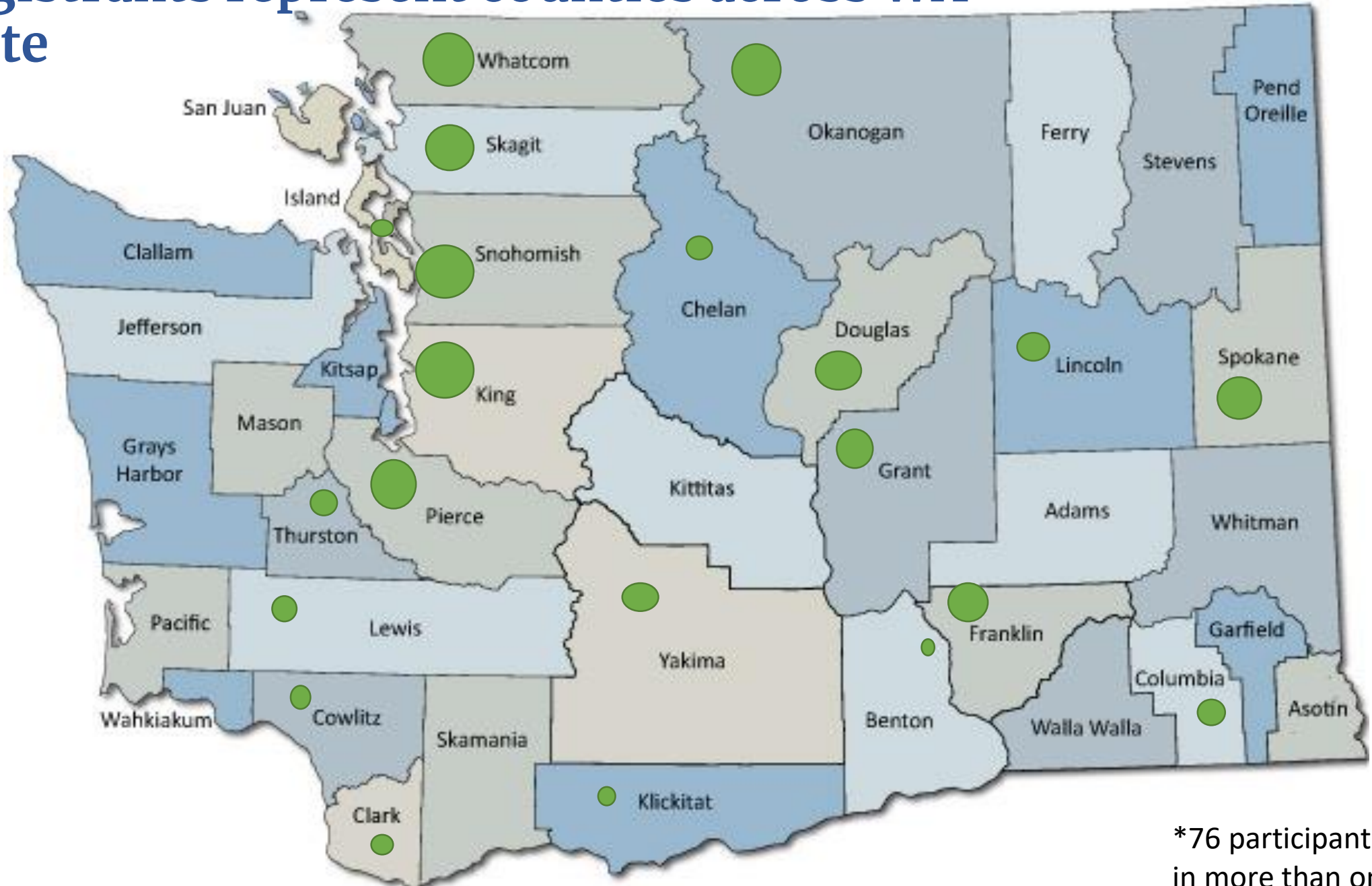
◆ 6 – Allies, 7%

◆ 3 – Supervisors of CHWs,
3%



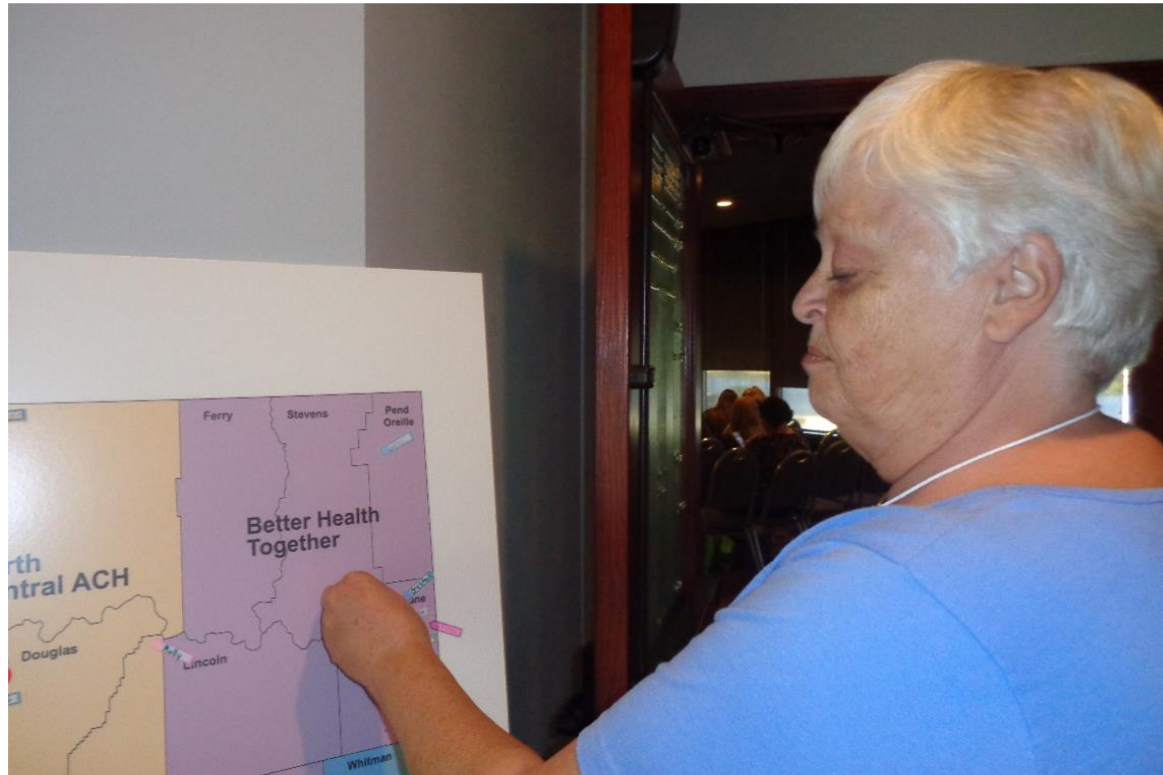
This was more than **double** our goal of 30 people!

Registrants represent counties across WA State

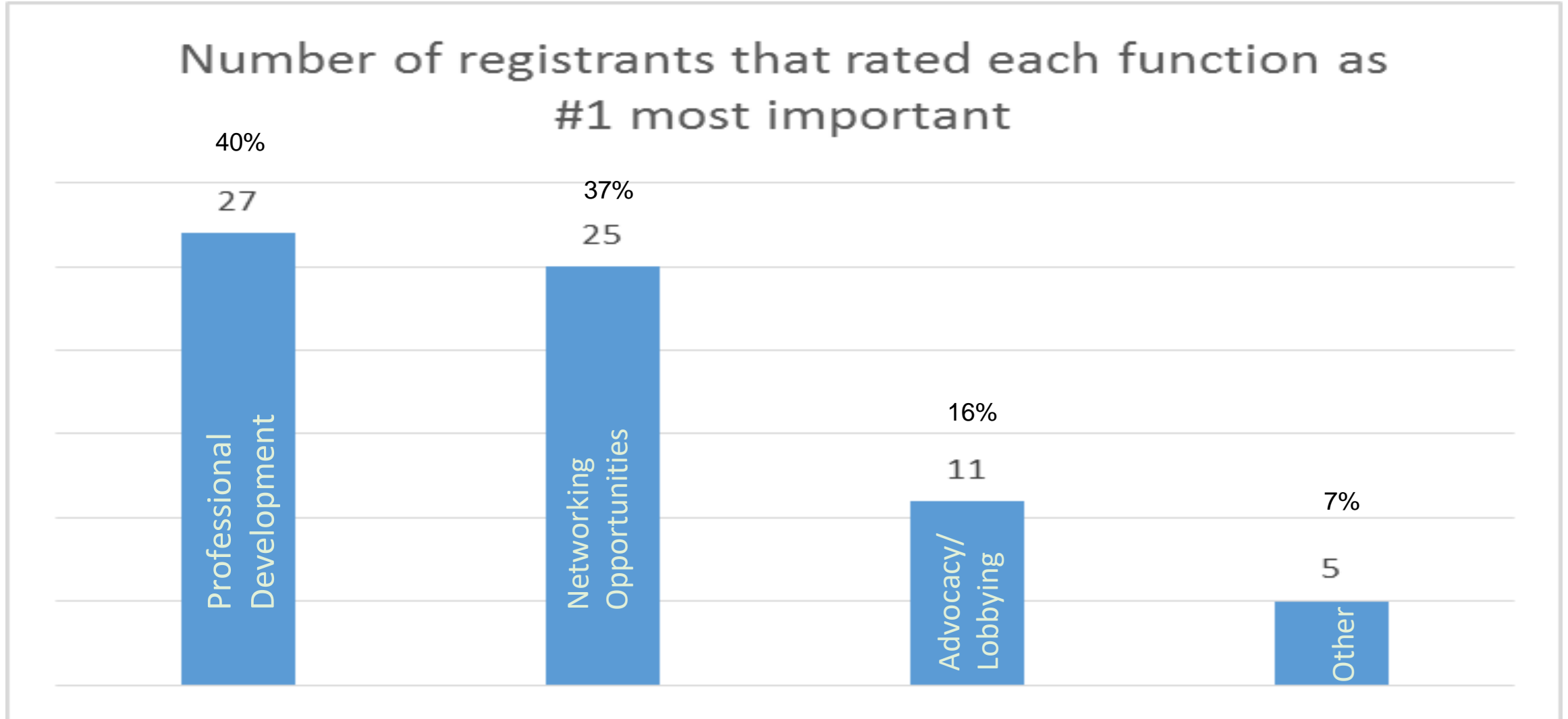


*76 participants total: 8 work in more than one county

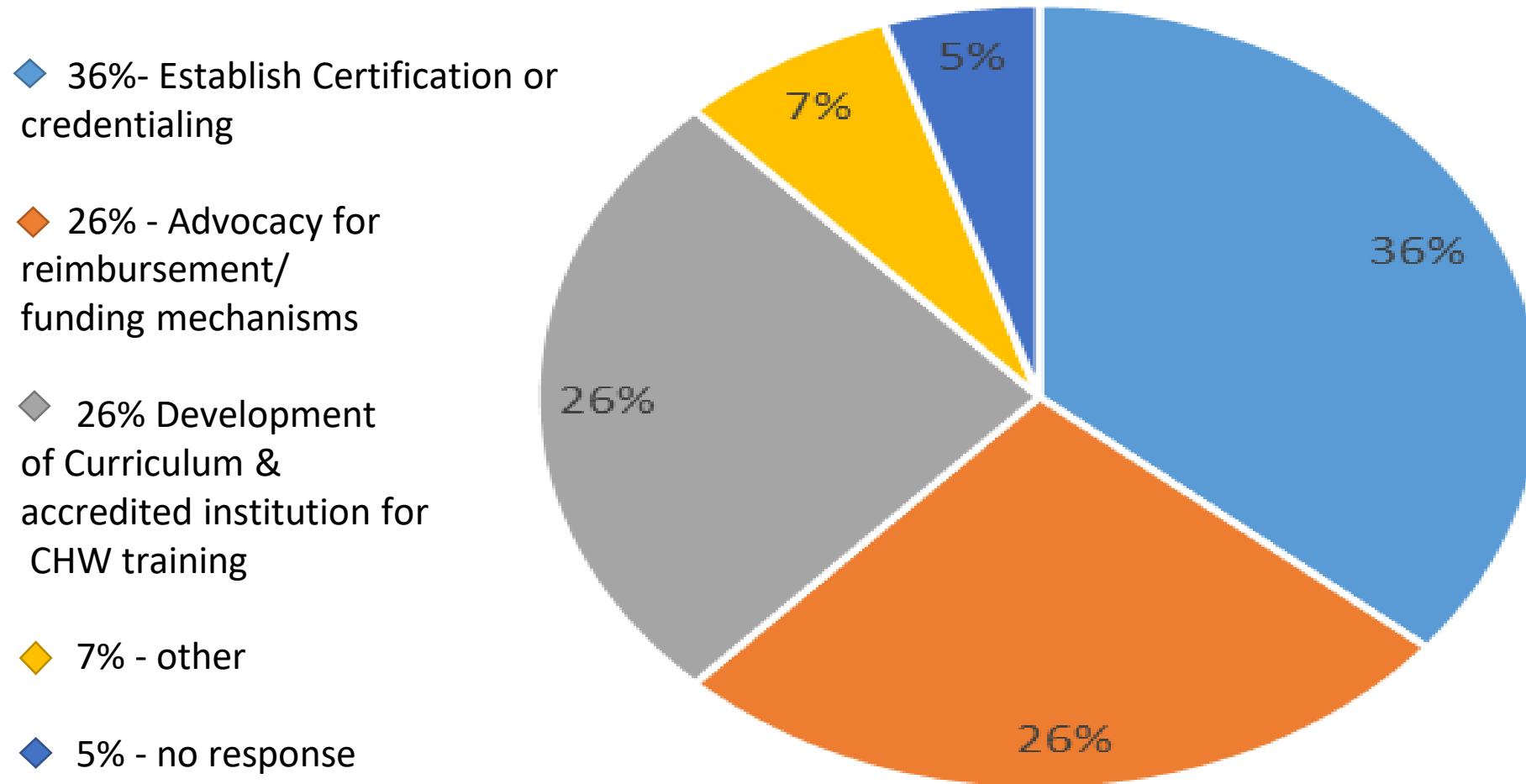
What do participants want their Association to do?



Registrants say professional development and networking opportunities are most important functions of a statewide CHW Association

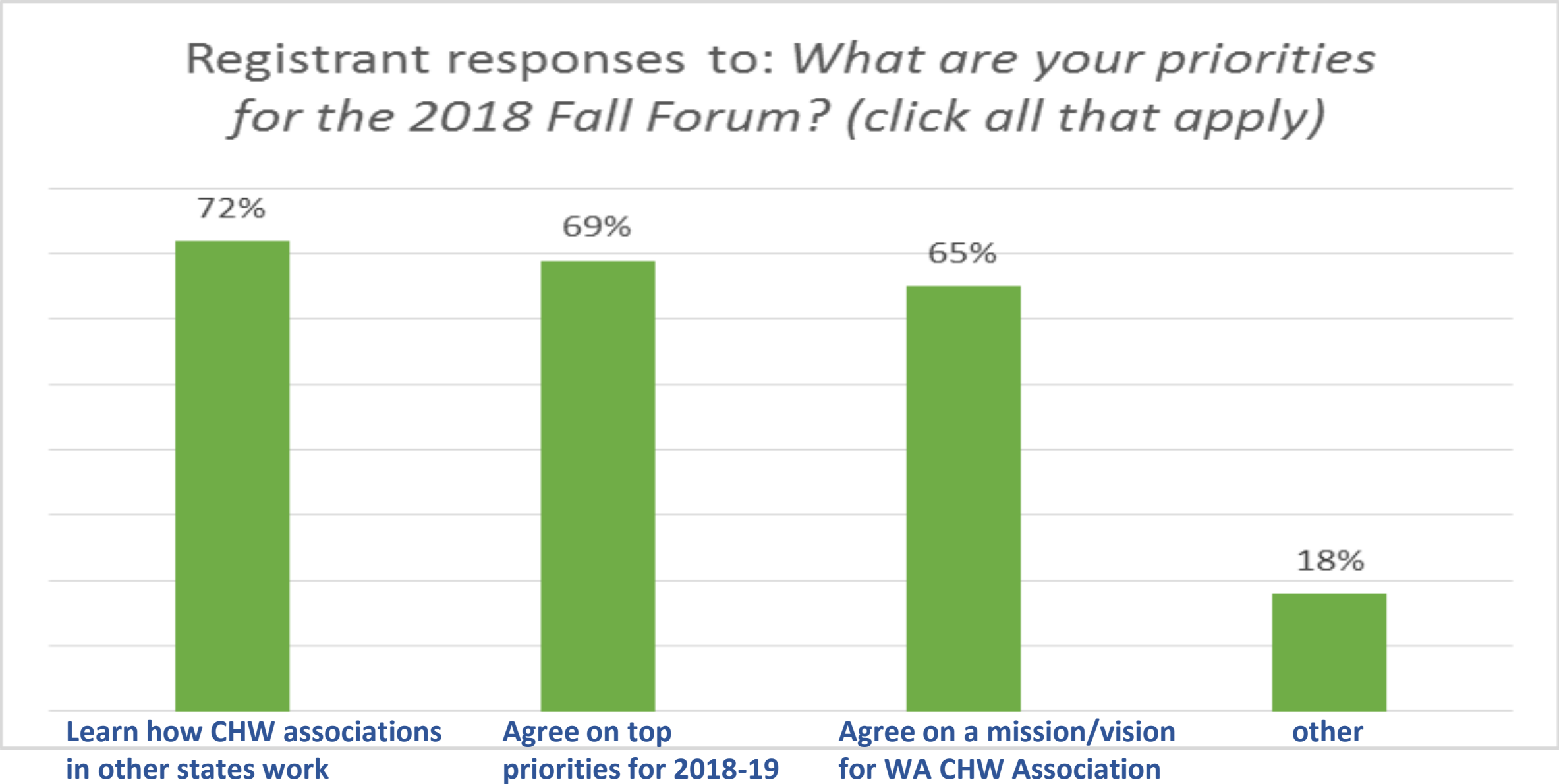


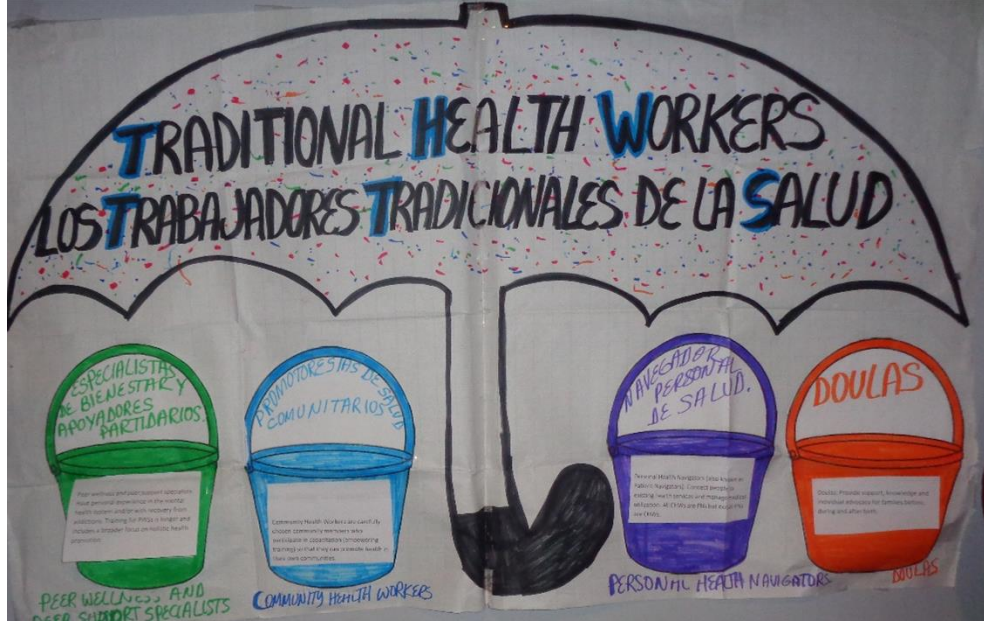
Registrants believe the most pressing long-term priority for the field of CHW work is establishment of certification or credentialing for CHWs



Registrants had multiple priorities for 2018 Fall Forum

Registrant responses to: *What are your priorities for the 2018 Fall Forum? (click all that apply)*





Our Sisters ORCHWA



Strategy Development



Defining the Priority Areas

Professional Development: education and skill training on topics that are important to CHWs

Networking Getting to know and learning from other CHWs you would not otherwise have met to share ideas, interests and goals and get support

Collective Advocacy/Lobbying Power. Identify issues that are important to CHWs and work with others to encourage local, regional and state policy makers to address the issue. For example, establishing CHW training and education standards that support CHWs or working to develop and implement financing mechanisms that pay for CHW services

Sustainability. Developing a structure that helps the CHW Association continue and grow

Initial Outcomes

- 1st official business meeting as Association
- New members signed up (many from local networks)
- Decision Making Criteria
- 3 Committees
- Transitional Leadership Team—to continue building governance
- Selected a new logo!



WACHWA

Washington State Community
Health Workers Association

Fast Forward 6 months

PROFESSIONAL DEVELOPMENT COMMITTEE



Education and skill training on topics that are important to CHWs

NETWORKING COMMITTEE



Getting to know and learning from other CHWs across the state otherwise have met to share ideas, interests and goals, and get support

ADVOCACY COMMITTEE



Identify issues that are important to CHWs and work with others to encourage local, regional and state policymakers to address the issues

SUSTAINABILITY & LEADERSHIP



Developing a structure that helps the CHW Association continue and grow (includes transitional leadership & sustainability)

Accomplished since Sept 2018

- ✓ Functioning Committees & Monthly Business meetings
- ✓ Committees developed work plan based on strategies
- ✓ Transitional Leadership Team (TLT) built strategic road map
- ✓ Identified and began development on web platform – PORTAL
- ✓ Developed formal structure with governance
 - ✓ –File as non-profit association w/ State of WA and federal 501 (3) c status
 - ✓ –formal governance structure, including election of officers (July/Aug)

How can you participate?

- Join the WACHWA!
Become a member and serve on a committee.
- Participate in the election of the officers!
- Join a local CHW Network!





Questions?